

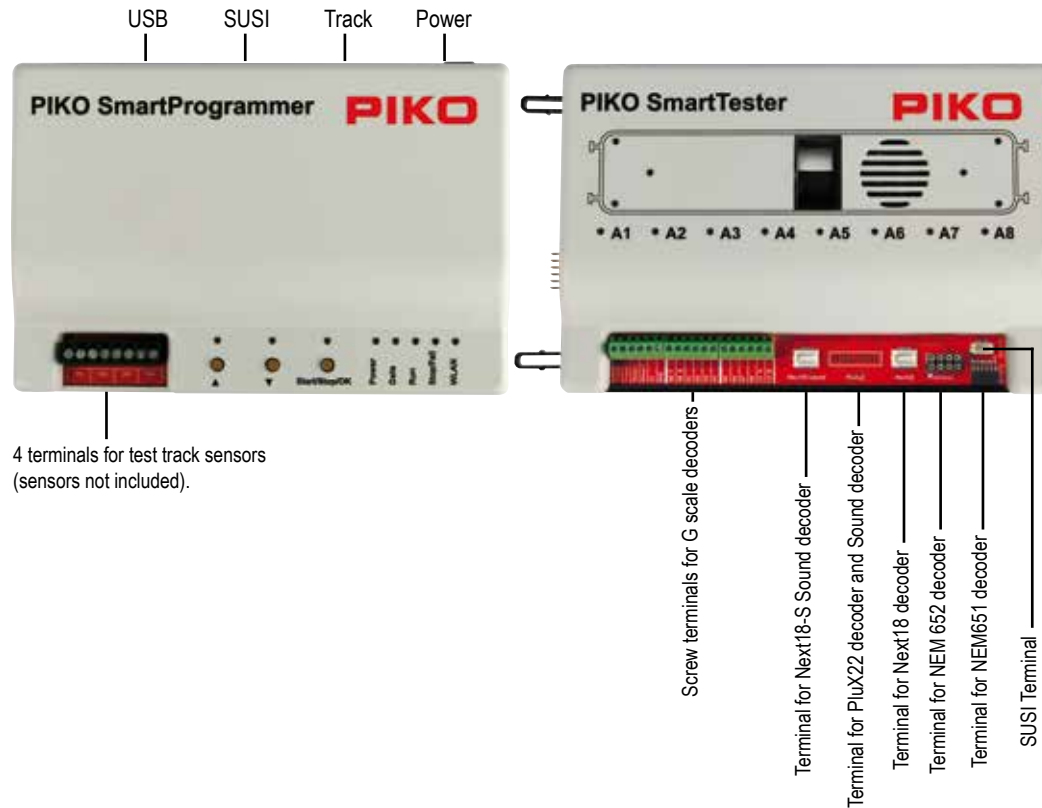


Quick start guide PIKO SmartProgrammer / PIKO SmartTester / PIKO SmartProgrammerApp

Contents:

- 1 x PIKO SmartProgrammer #56415 and/or
- 1 x PIKO SmartTester #56416 (without accessories)
- 1 x Plug-in Power Supply DC 16V/0,7A
- 1 x USB-cable for data transfer
- 1 x Plug for track wires
- 1 x Quick start guide

The device connectors



Installation

Windows 7 / 10

Please download the PIKO SmartProgrammerApp to your PC via the Microsoft App Store or use the link in the Piko web shop. Begin the setup and follow the instructions. No further action is necessary.

Android

Use the link in our web shop to the Google Playstore or go there directly. The PIKO SmartProgrammerApp is available for direct installation from the Playstore.

iOS

Use the link in our web shop to the Apple AppStore or go there directly. The PIKO SmartProgrammerApp is available for direct installation from the AppStore.

Connecting the SmartProgrammer/SmartTester to a test track

First plug the PIKO SmartTester (# 56416) into the PIKO SmartProgrammer (# 56415). Then connect the track wires to the back of the PIKO SmartProgrammer using the green plug. Finally, connect the power cord to the PIKO SmartProgrammer. The „Power“ (white), „Stop / Fail“ (red), and „WLAN“ (blue) LEDs will now light up. You can connect the PIKO SmartProgrammer to a PC via a USB cable or WiFi.

USB Windows PC

Connect the PIKO SmartProgrammer to a USB 2.0 port on your Windows PC using the included micro USB cable. The USB port on the PIKO SmartProgrammer is located on the back. Your Windows PC will automatically recognize a new USB device. The driver for the PIKO SmartProgrammer was already installed when the PIKO SmartProgrammerApp was installed.

Wireless LAN (all supported devices)

The PIKO SmartProgrammer features an integral WiFi network. Search your device for new WiFi networks. The „PIKO SmartProgrammer“ network will be displayed along with a serial number. Connect to this network. You may get a message saying that you cannot connect to the Internet using WiFi. You can either ignore this message or do not disconnect.

Legal information

Declaration of EU conformity

PIKO Spielwaren GmbH hereby declares that the product complies with the 2014/53/EU directive. The complete text of the EU Declaration of Conformity is available at the following Internet address: <https://www.piko.de/konform>

Radio frequencies and transmission power

WLAN 2.4 GHz

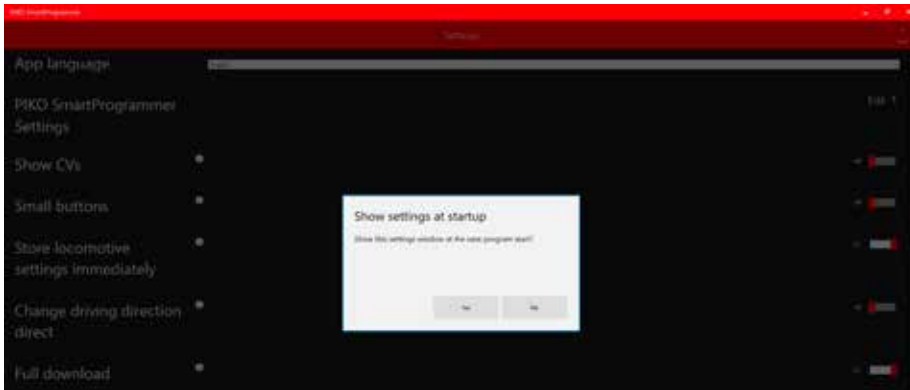
- Frequency range 2.4 GHz – 2.483 GHz
- Maximum transmission power 100 mW

Starting the PIKO SmartProgrammerApp

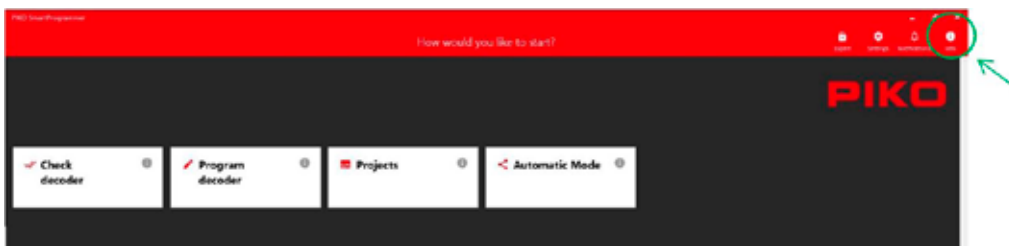
Open the PIKO SmartProgrammerApp on your device.



After starting the app, choose basic app settings in the Settings menu. Selecting „Next“ in the header will take you to the next step.



At this point you can decide whether the basic settings of the app are displayed again each time you start the app.



After confirmation, you are taken to the main menu of the PIKO SmartProgrammerApp. Next, select the Info button, where you will receive further information on the basic operation of the PIKO SmartProgrammerApp.

Connection diagram for a test track

